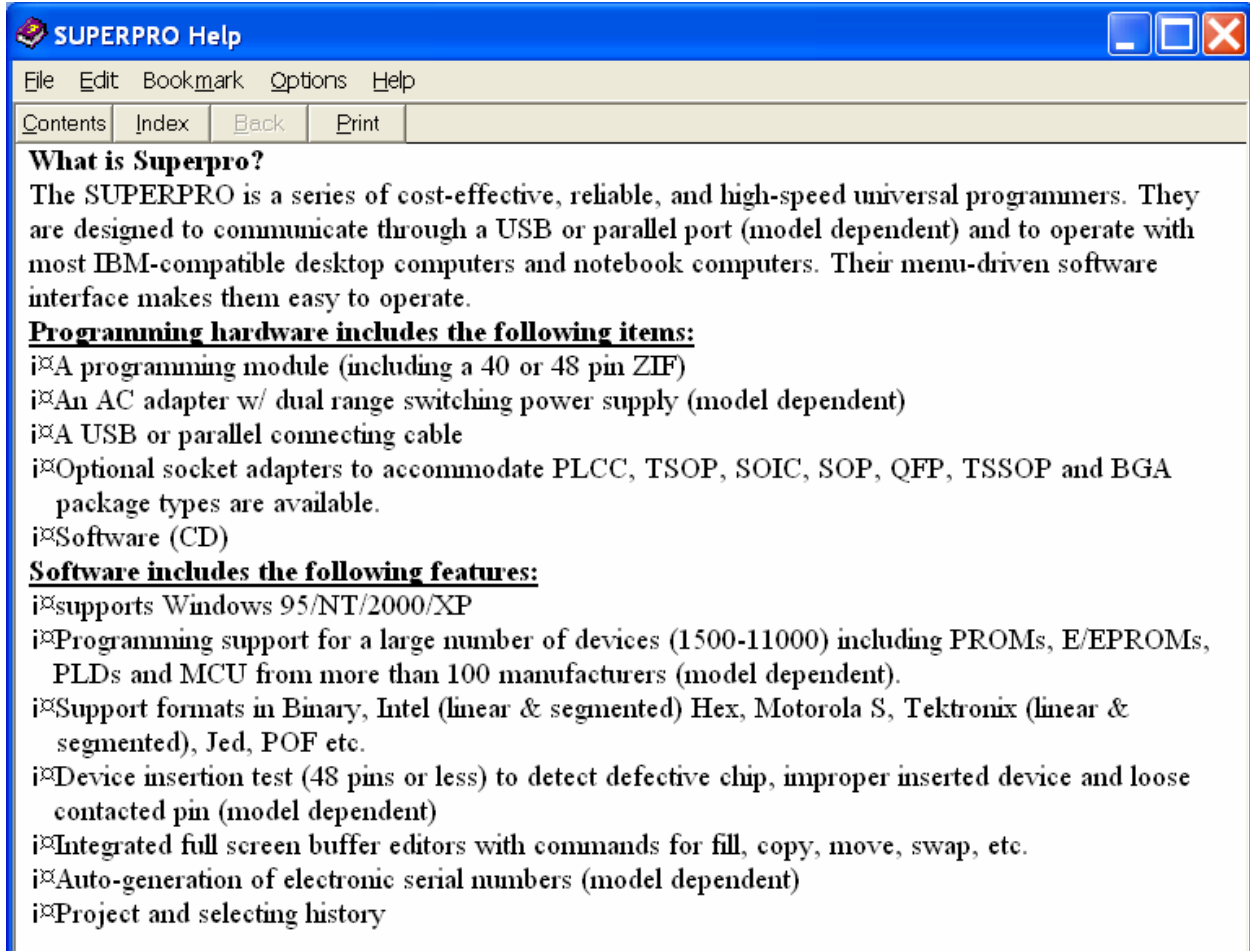
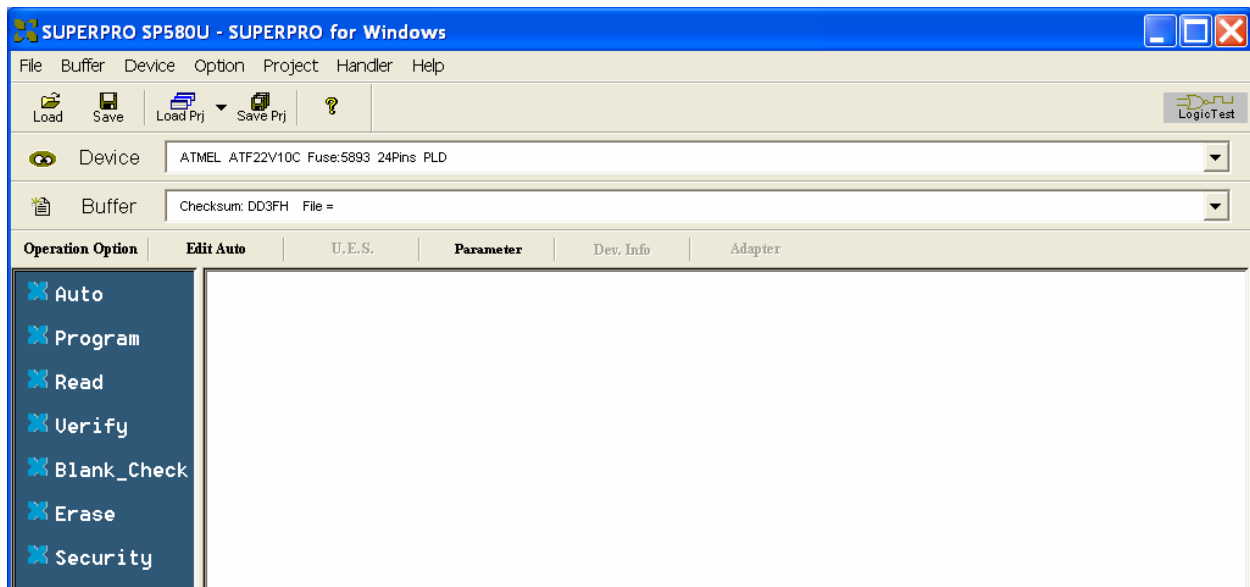


Remove all chips from the SuperPro 580U, before starting “SuperPro USB series” program.

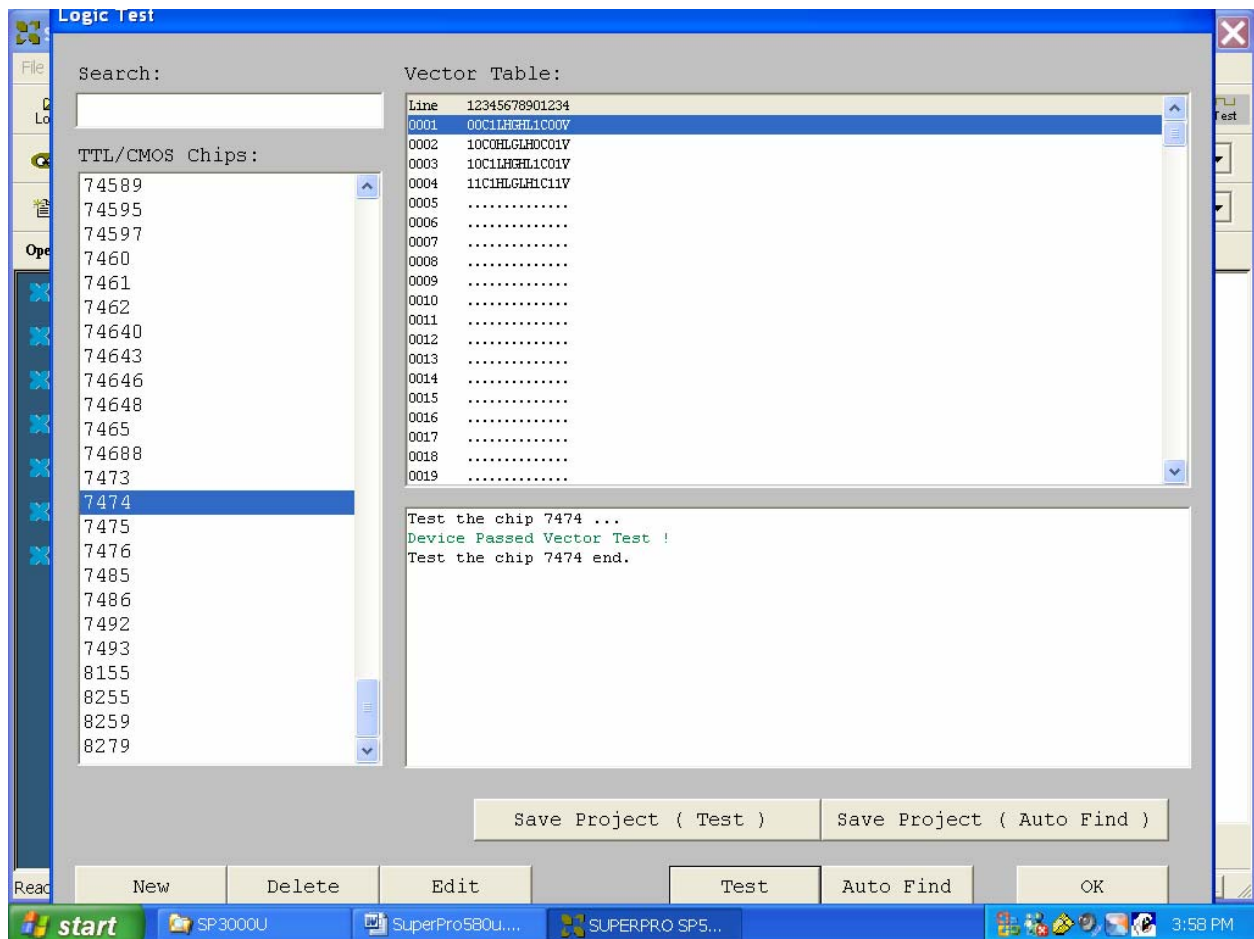


## Main Screen



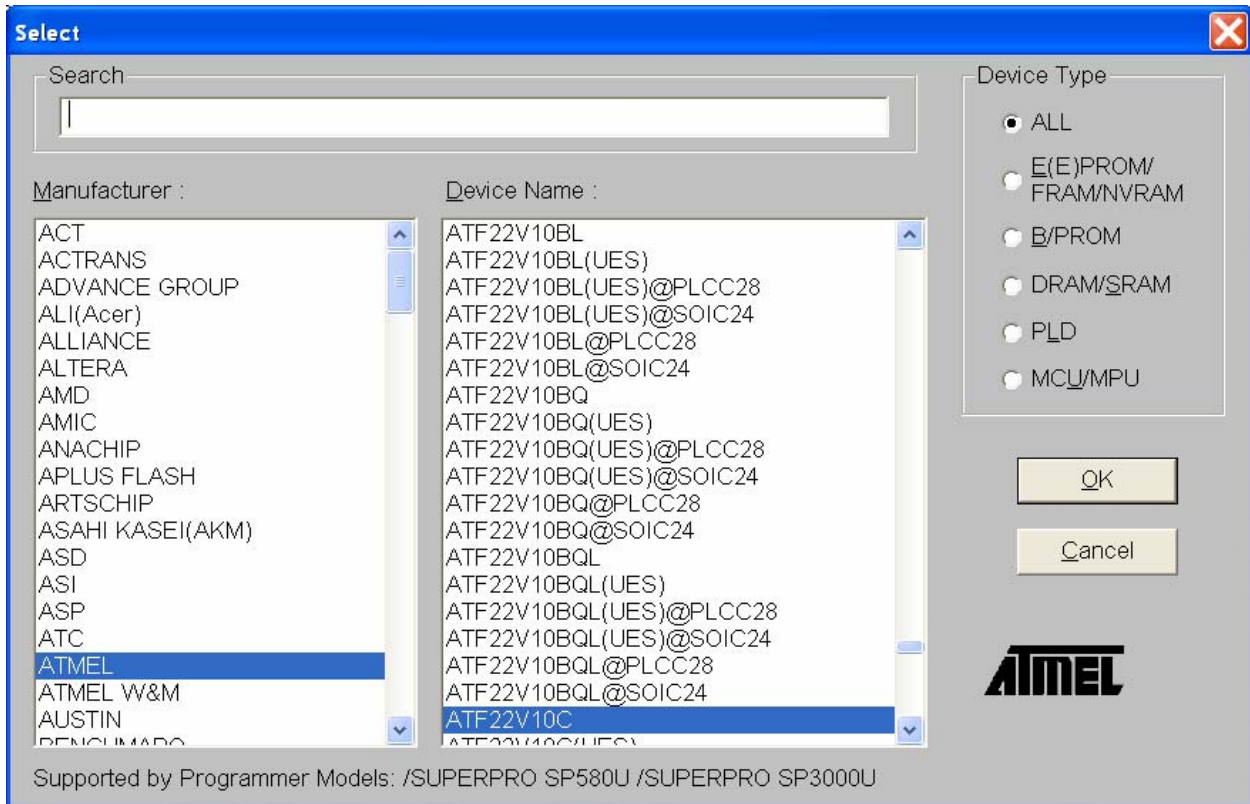
## Logic Test

- Choose upper right button (Logic Test) on Main Screen
- Move the 580U socket lever to allow chip insertion.
- Discharge yourself to the programmer, before handling the chip.
- Insert chip at the bottom of the socket. Note the embossed chip diagram.
- Move the 580U socket lever to grip the chip pins.
- Choose device, then Test
- Repeat as necessary
- OK to exit

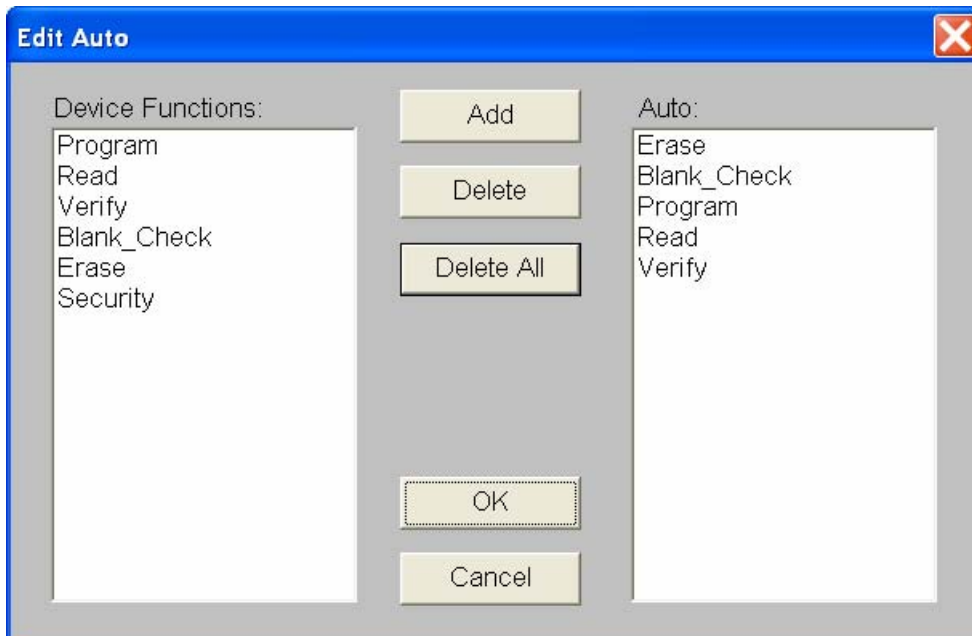


### Program Atmel ATF22V10C

- Select Device, then OK

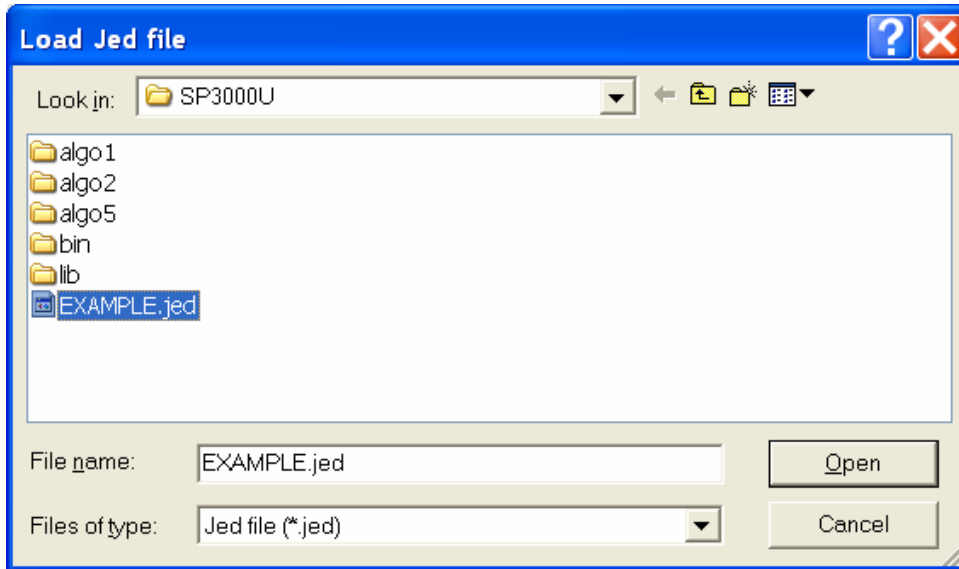


- Option=>Edit Auto, Add desired functions, then OK

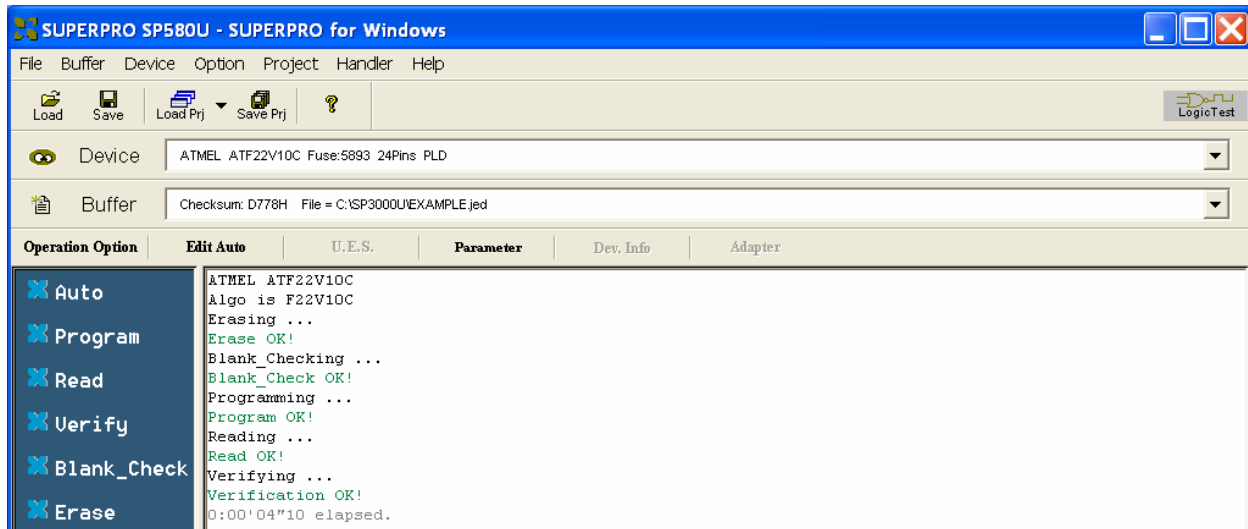


## Xeltek SuperPro 580U Universal Programmer and Logic IC Tester

- File=>Load (from diskette, CD, or USB drive)



- Move the 580U socket lever to allow chip insertion.
- Discharge yourself to the programmer, before handling the chip.
- Insert chip at the bottom of the socket. Note the embossed chip diagram.
- Move the 580U socket lever to grip the chip pins.
- Select Auto Button from Menu on left



Move the 580U socket lever to allow chip removal.  
Discharge yourself to the programmer, before handling the chip.

References:

- <http://www.xeltek.com/>
- C:\SP3000U\sp3000u\_manual.pdf